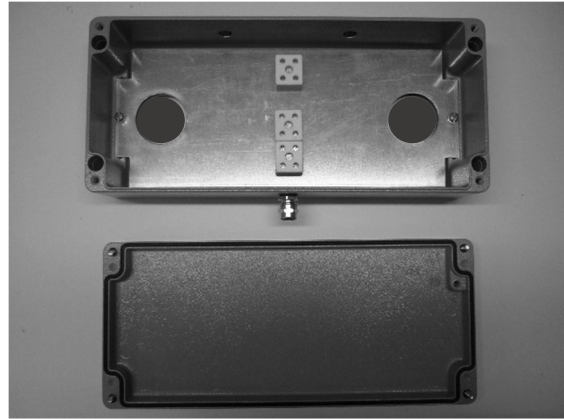
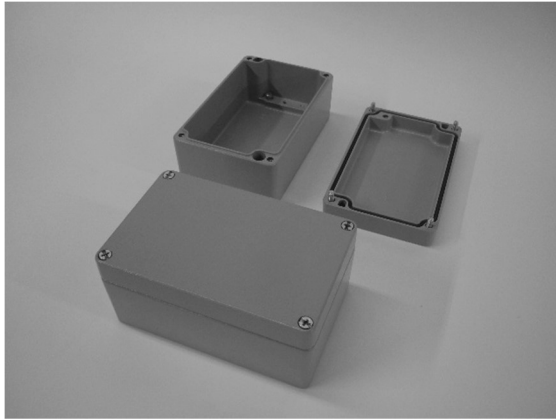


## CEA Fire-rated enclosures.

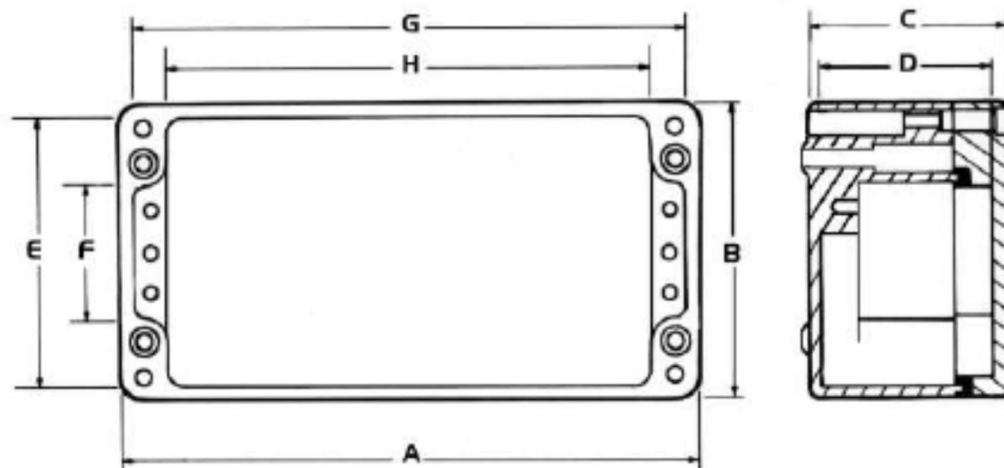
Die cast aluminium junction boxes /equipment enclosures for LV Power cabling applications. Robust, multi-purpose and cost effective.....



### Features

- ✓ Fully flame retardant and fire-rated to IEC60331-2: 2009 at 250°C for 2 hours
- ✓ Constructed from Si 12 alloy die-cast aluminium (DIN EN 1706 AC-AISI 12 Fe)
- ✓ Chemical resistant
- ✓ Corrosion and sea water proof
- ✓ Available as Ex certified (Sira 08 ATEX 3212 or IECEx SIR 13.0038X and fitted with an M6 earth stud).
- ✓ IP66 as standard
- ✓ IP68 versions at additional cost up to 3m
- ✓ Lids fitted with Allen stainless steel fasteners
- ✓ Finished in grey (RAL 7001) as standard. Also available in other colours, unpainted, anodised or finished.
- ✓ Optional items include: internal mounting plates, internal or external hinges, external mounting brackets, security lid fixings and wire lock screws.
- ✓ Ceramic high temperature terminal blocks (2, 3 and 4 pole: 4mm<sup>2</sup>, 10mm<sup>2</sup> or 16mm<sup>2</sup>) or DIN rail mounted ceramic terminals (2.5/4mm<sup>2</sup> or 10/16mm<sup>2</sup>).
- ✓ Impact resistance >7 Joule (EN 50014)

## Dimensions



PART NOS	A	B	C	D	E	F	G	H
CEA 504530	50	45	30	25	40	18.3	45	30.6
CEA 586436	58	64	36	29	56	32	50	34
CEA 986436	98	64	36	29	56	32	90	75
CEA 156436	150	64	36	27	56	32	142	126
CEA 186436	185	64	36	29	56	32	179	162
CEA 758057	75	80	57	49	72	49	66.5	51.5
CEA 128057	125	80	57	49	72	48	117	101
CEA 178057	175	80	57	49	72	48	167	152
CEA 258052	250	80	52	45	72	48	242	226
CEA 101080	100	100	80	74	92	54	92	71
CEA 161080	160	100	80	74	92	54	152	131
CEA 201080	200	100	80	74	92	54	192	171
CEA 231011	230	100	110	101	89.5	60	220	160
CEA 121280	122	120	80	72	111	66	113	90
CEA 121290	122	120	90	82	111	66	113	90
CEA 221280	220	120	80	72	111	66	211	188
CEA 221290	220	120	90	82	111	66	211	188
CEA 361280	360	120	80	72	111	66	351	323
CEA 141490	140	140	90	82	131	76	131	100
CEA 201490	200	140	90	82	131	76	191	160
CEA 161690	160	160	90	82	151	90	151	120
CEA 261690	260	160	90	82	151	90	251	220
CEA 361690	360	160	90	82	151	90	346	316
CEA 561690*	560	160	90	82	148	90	549	520
CEA 181810	180	180	100	92	171	110	171	140
CEA 281810	280	180	100	92	171	110	271	240